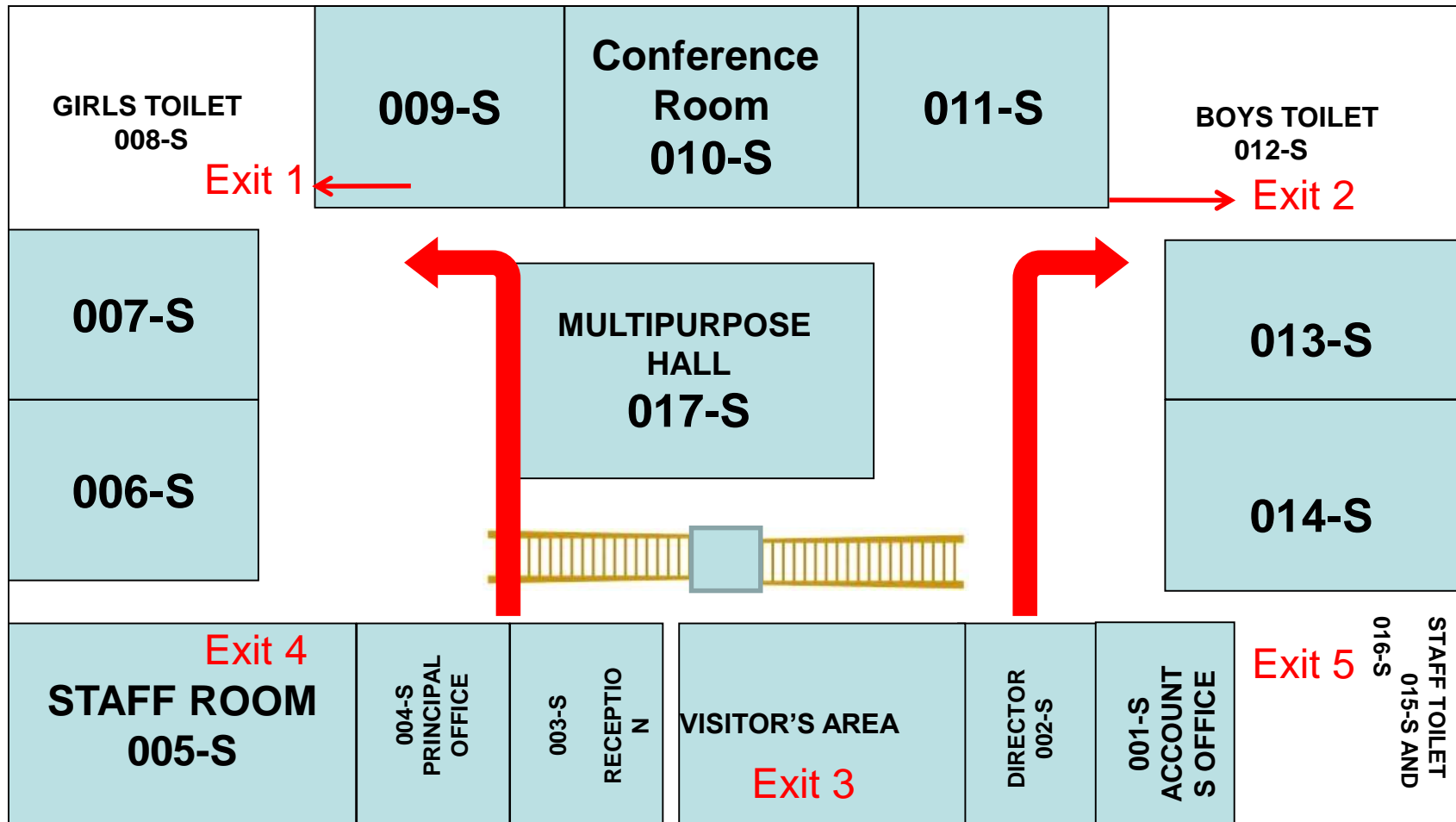


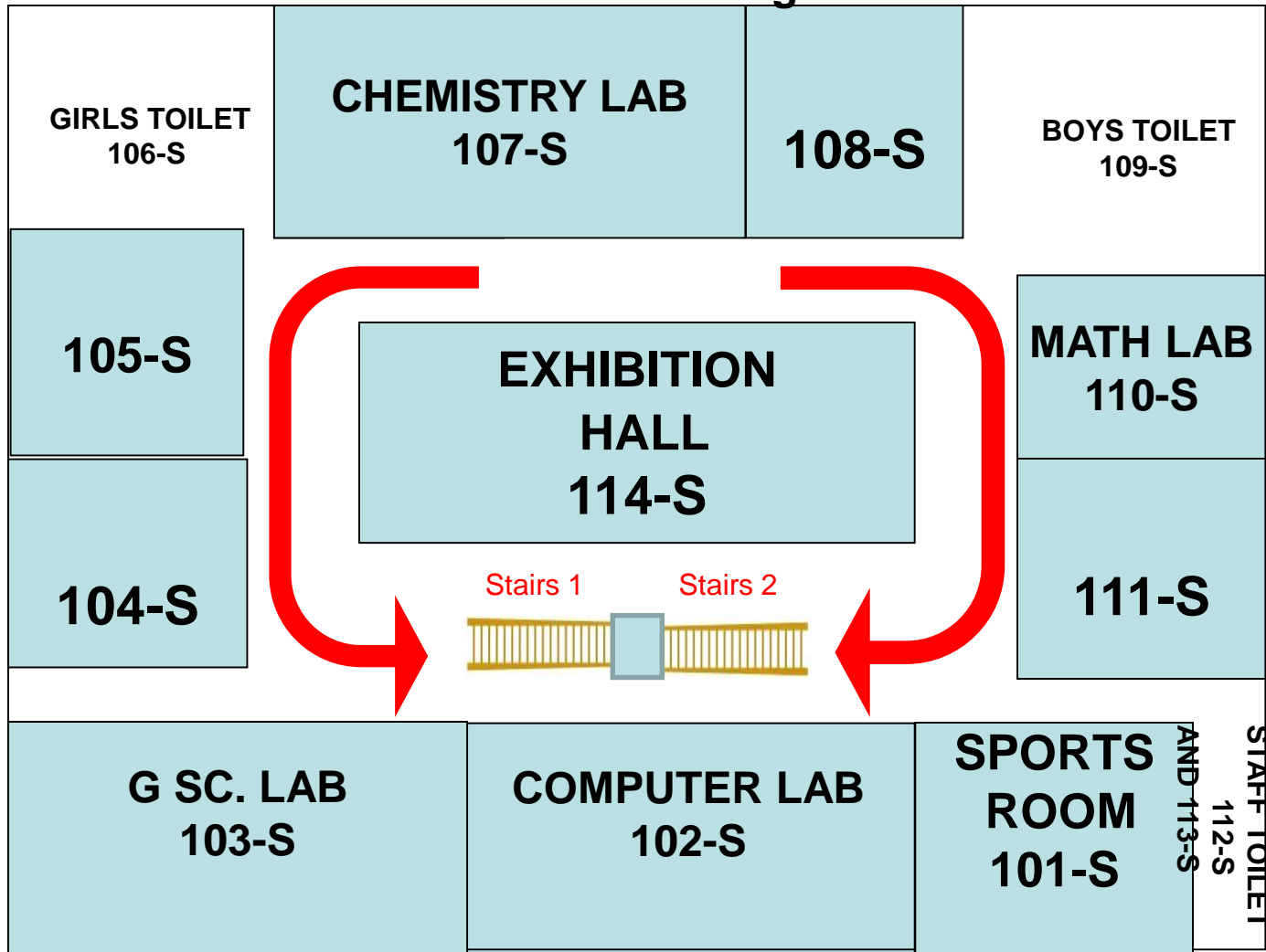
F-67 Evacuation Plan for Sr. Wing Ground Floor



Protocols to be followed for exit on ground floor :

1. Room no 006-S- AND 00-S,017-S should use **Exit -1**
2. Room no 010-S AND 014-S should use **Exit -2**
3. Room no 001-S AND 002-S should use **Exit-5**
4. Room no 003-S AND 005-S should use **Exit -4**

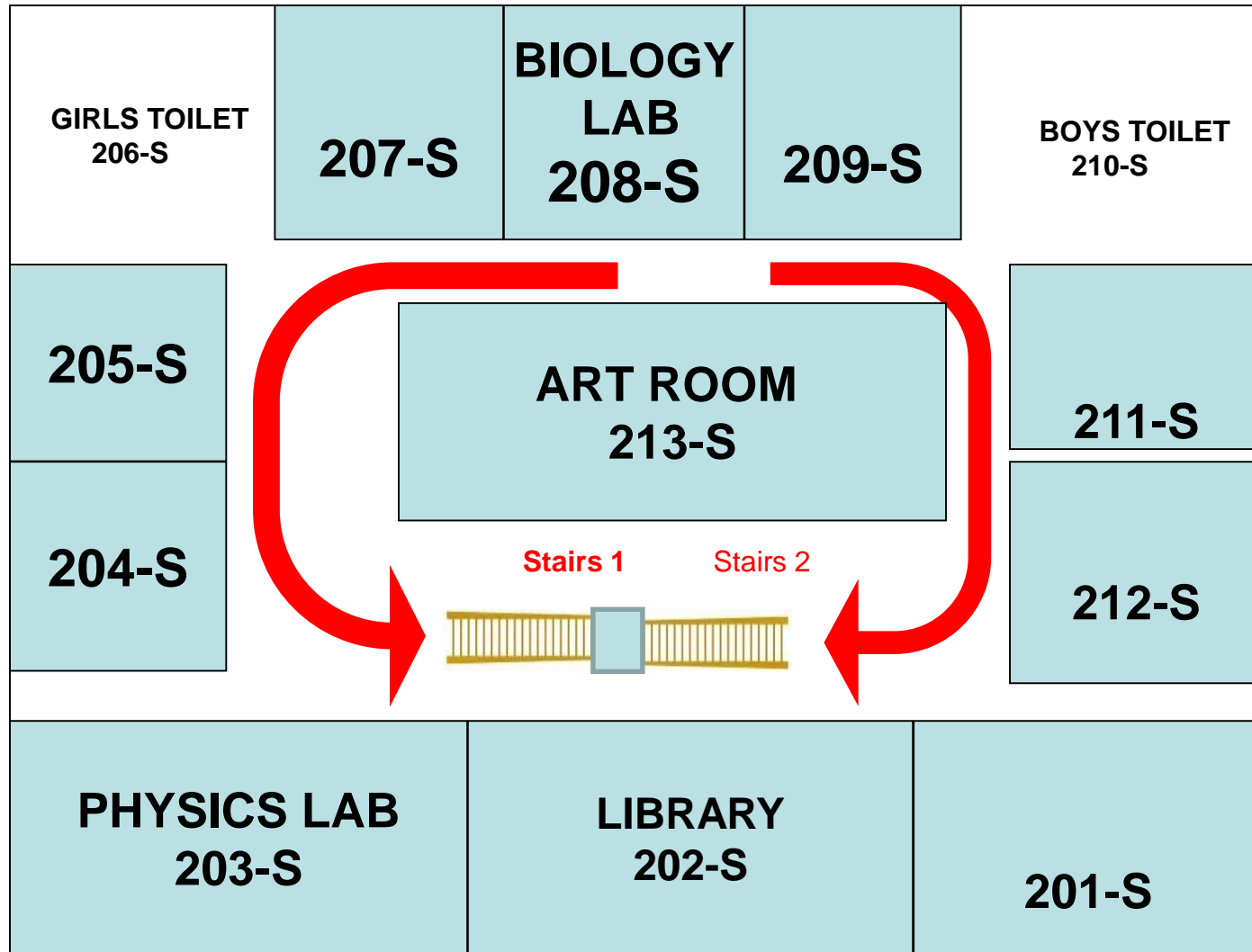
F-67 Evacuation Plan for Sr. Wing First floor



Protocols to be followed for exit from floor :

1. Room no 103-S,104-S,105-S &106-S should use **Stairs -1** and make an exit from **Exit 3, Exit-4, Exit-5 on the Ground Floor.**
2. Room no 101-S,102-S,107-S AND 012-S should use **Stairs -2** and make an exit from **Exit 3, Exit-4, Exit-5 on the Ground Floor.**

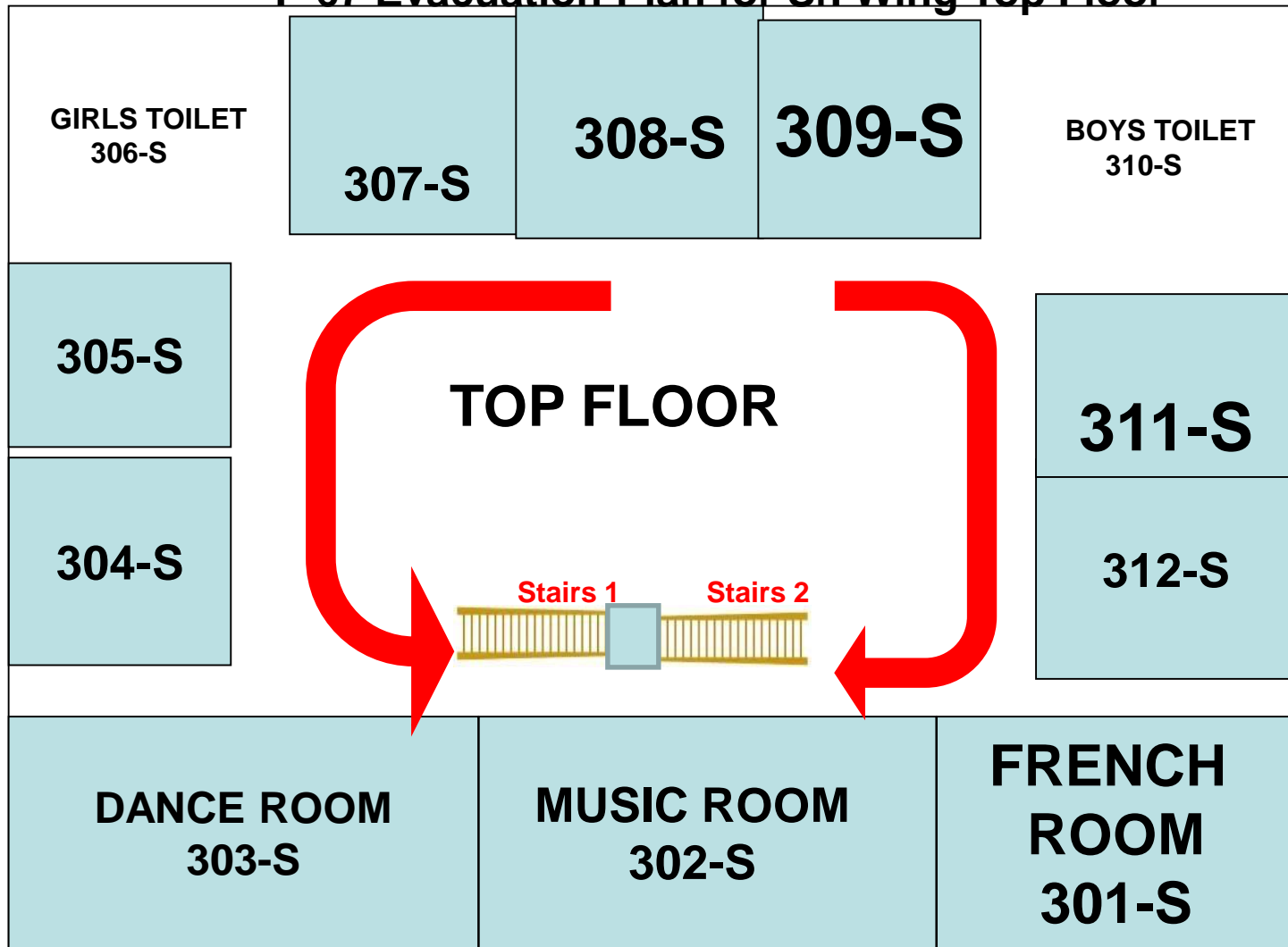
F-67 Evacuation Plan for Sr. Wing Second Floor



Protocols to be followed for exit from floor :

1. Room no 203-S,204-S,205-S AND 208-S,213-S should use **Stairs -1** and make an exit from **Exit – 1,Exit 3, Exit-4 on the G Floor** .
2. Room no 201-S,202-S,208-S,209-S AND 212-S should use **Stairs -2** and make an exit from **Exit 2, Exit-3, Exit-5 on the Ground Floor**.

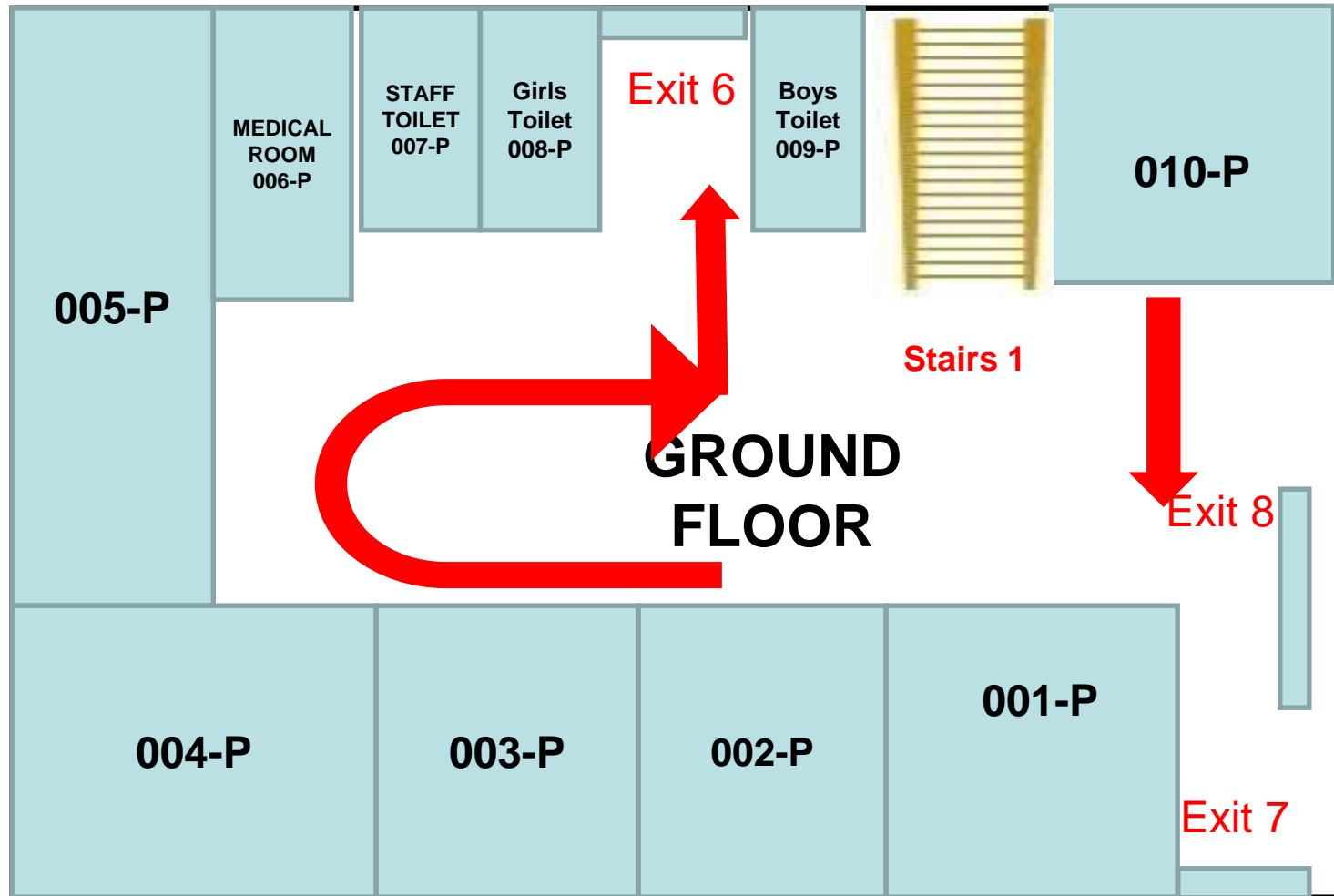
F-67 Evacuation Plan for Sr. Wing Top Floor



Protocols to be followed for exit from floor :

1. Room no 303-S,304-S,305-S & 307-S should use **Stairs -1** and make an exit from **Exit – 1,Exit 3, Exit-4 on the G Floor** .
2. Room no -S301-S,302-S,309-S,311-S & 312-S should use **Stairs -2** and make an exit from **Exit 2, Exit-3, Exit-5 on the Ground Floor**.

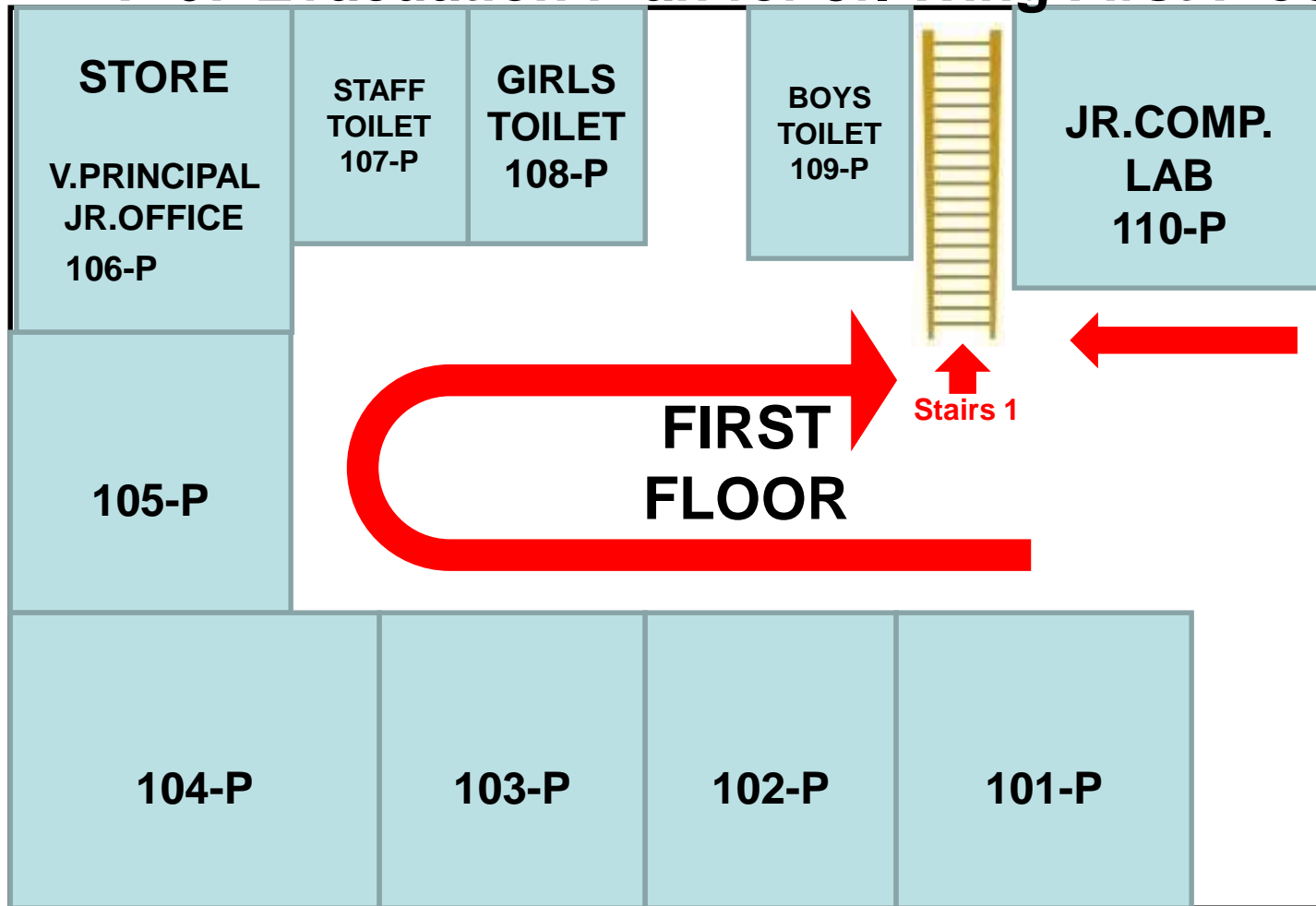
F-67 Evacuation Plan for Jr. Wing Ground Floor



Protocols to be followed for exit from Ground floor :

1. Room no 002-P,003-P,004-P,005-P & 006-P should exit from **Exit – 6**.
2. Room no 007-P should exit from **Exit – 7 and Exit-8**

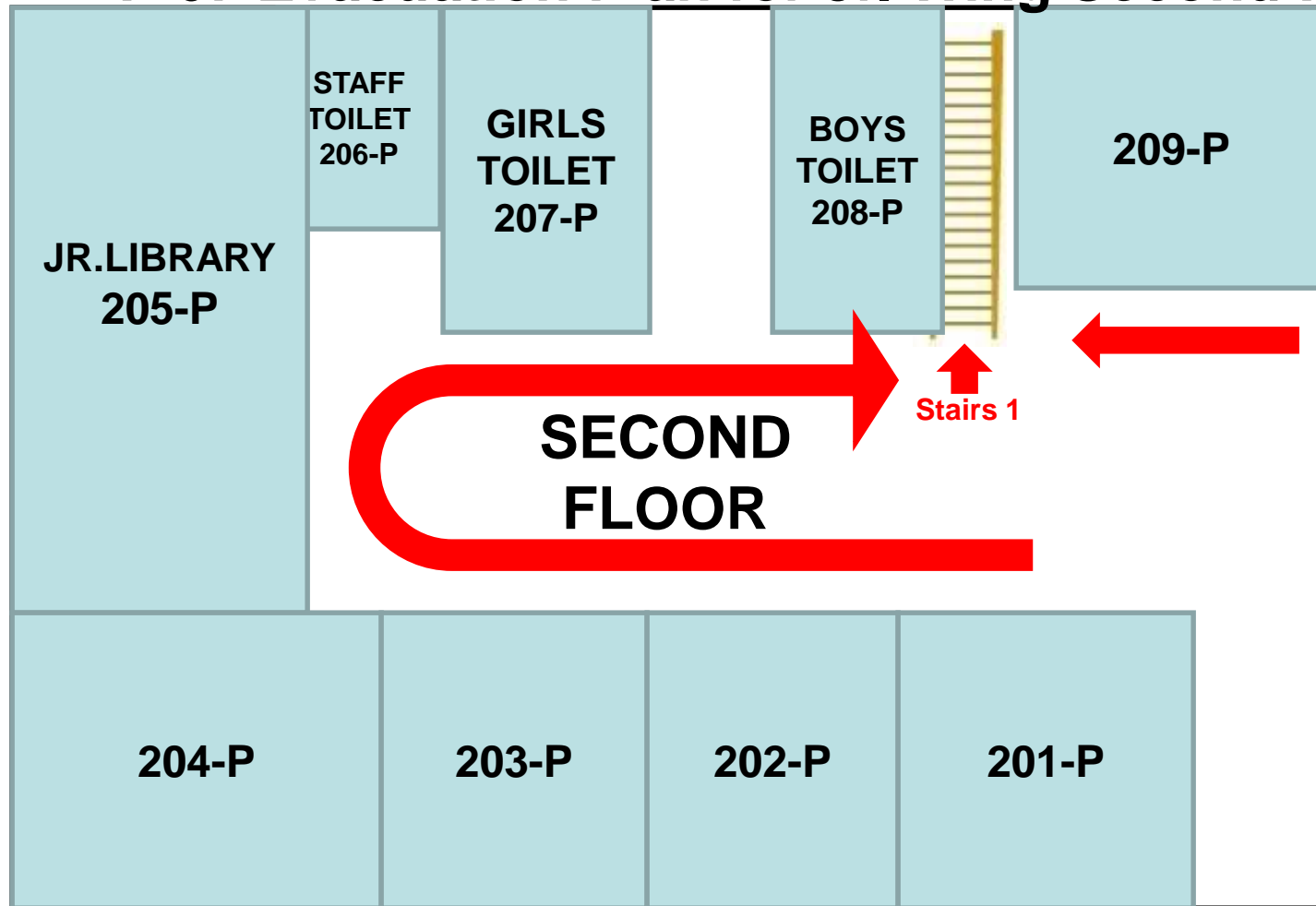
F-67 Evacuation Plan for Jr. Wing First Floor



Protocols to be followed for exit from First Floor :

1. All Classes on the floor should use **Stairs-1** and exit from **Exit-6, Exit-7** and **Exit -8**

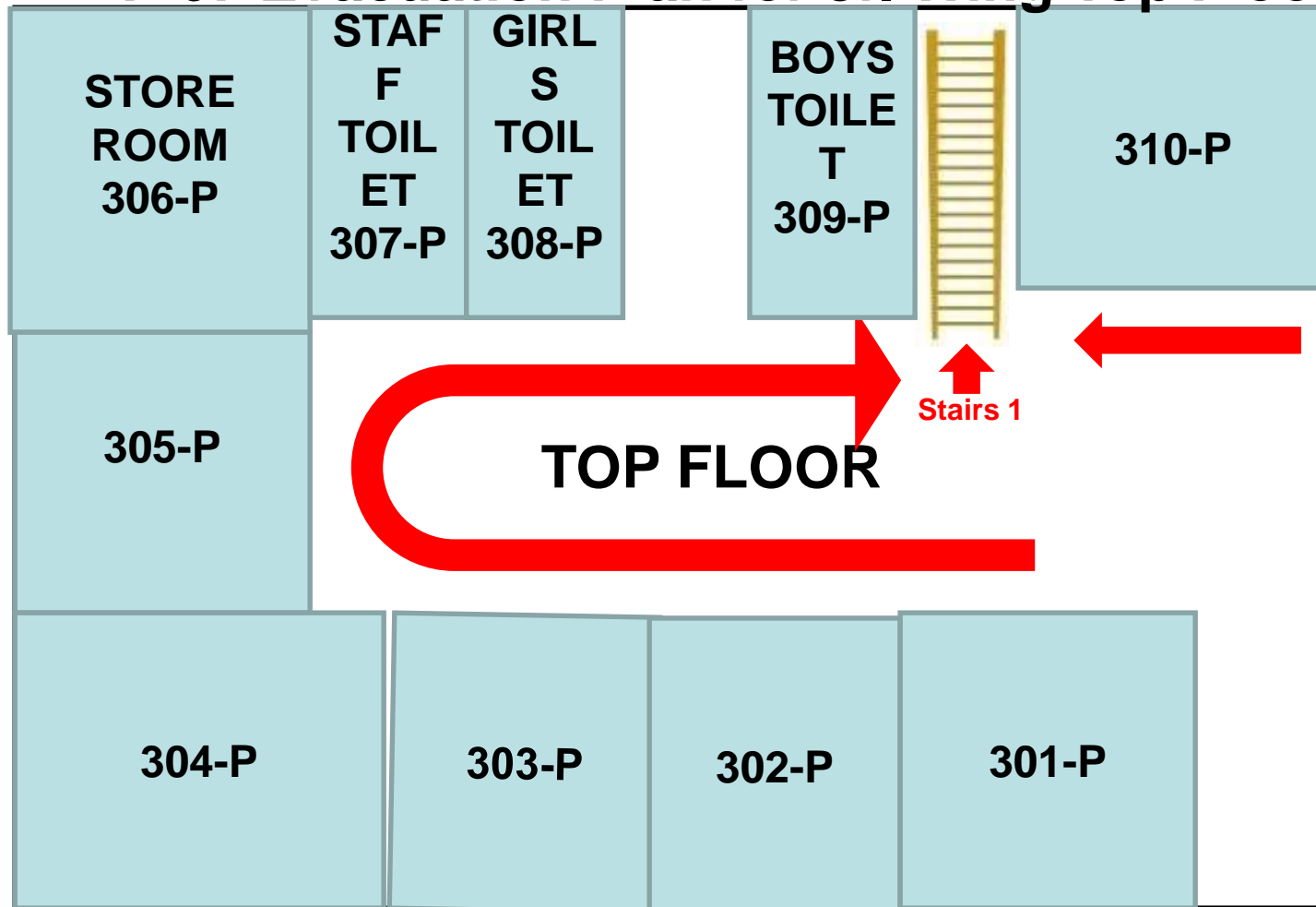
F-67 Evacuation Plan for Jr. Wing Second Floor



Protocols to be followed for exit from Second Floor :

1. All Classes on the floor should use **Stairs-1** and exit from **Exit-6, Exit-7** and **Exit -8**

F-67 Evacuation Plan for Jr. Wing Top Floor



Protocols to be followed for exit from Top Floor :

1. All Classes on the floor should use **Stairs-1** and exit from **Exit-6, Exit-7** and **Exit -8**

F-67 Evacuation Plan for Jr. Wing Top Floor

